

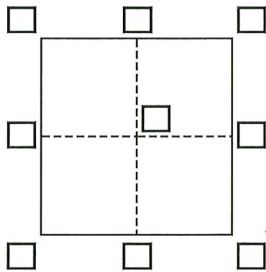
# CORNER RECORD

Agency Index CR22-039

Document Number 011-246-05 (ADJ)

City of SAN RAFAEL County of MARIN, California

Brief Legal Description MONUMENT LOCATED ALONG THIRD STREET AT E STREET



### CORNER TYPE

- Government Corner  Control   
 Meander  Property   
 Rancho  Other

Date of Survey January - February 2022

### COORDINATES (Optional)

N. \_\_\_\_\_ E. \_\_\_\_\_

Elevation \_\_\_\_\_

Units Metric  U.S. Survey Foot

Horizontal Datum \_\_\_\_\_

Zone \_\_\_\_\_ Epoch Date \_\_\_\_\_

Vertical Datum \_\_\_\_\_

- Complies with Public Resources Code §§8801-8819  
 Complies with Public Resources Code §§8890-8902

PLS Act Ref.:  8765(d)  8771  8773  Other:

Corner/Monument:  Left as found  Established  Rebuilt  Pre-Construction  
 Found and tagged  Reestablished  Referenced  Post-Construction

Narrative of corner identified and monument as found, set, reset, replaced, or removed:

See sheet #2 for description(s):

FOUND 3/4" IRON PIPE, ALONG THIRD STREET AT E STREET, LABELED LS 2138, PER 2014 M 169.

SET REFERENCE POINTS IN CURB AND ASPHALT, AS SHOWN ON PAGE 2 TO PRESERVE MONUMENT LOCATION.

### SURVEYOR'S STATEMENT

This Corner Record was prepared by me or under my direction in conformance with

the Professional Land Surveyors' Act on May 10, 2022

Signed [Signature] P.L.S. or R.C.E. No. 9387



### COUNTY SURVEYOR'S STATEMENT

This Corner Record was received 8/4/22

and examined and filed 9/19/22

Signed T. Kl. Park P.L.S. or R.C.E. No. 8176

Title County Surveyor

County Surveyor's Comment



DOC# 011-246-05 (ADJ)  
 AGENCY INDEX: CR22-039

Graphic Scale (in feet)



1 inch = 20 ft.

E STREET

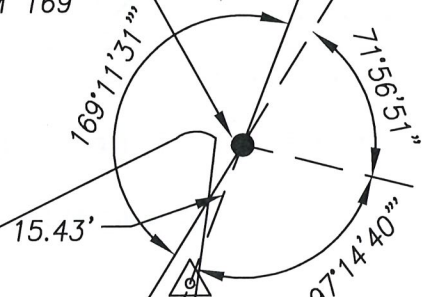
SET NAIL  
 AND TAG  
 PLS 9387  
 IN CURB

132.49'

10.81'

FOUND 3/4" IRON PIPE  
 LS 2138  
 PER 2014 M 169

3RD STREET (WESTBOUND -  
 ONE WAY DIRECTION)



15.43'

169°11'31"

71°59'51"

53.90'

SET NAIL  
 AND TAG  
 PLS 9387  
 IN ASPHALT

SET NAIL  
 AND TAG  
 PLS 9387  
 IN CURB

10°48'29"

97°14'40"



E STREET

LANDS OF LINCOLN  
 APN: 011-246-05  
 1515 3RD ST, SAN RAFAEL, CA 94901

**LEGEND**



TIE TO PRE-CONSTRUCTION REFERENCE POINT  
 SET REFERENCE POINT, NAIL AND TAG PLS 9387  
 FOUND MONUMENT AS NOTED

**CSW | ST2**

**CSW/Stuber-Stroeh Engineering Group, Inc.**

Civil & Structural Engineers | Surveying & Mapping | Environmental Planning  
 Land Planning | Construction Management

45 Leveroni Court  
 Novato, CA 94949

tel: 415.883.9850  
 fax: 415.883.9835

http://www.cswst2.com

© 2019

Rev. -

Date: 05/10/22

Job No. 1920101.50

Scale: 1" = 20'

**MONUMENT PRESERVATION  
 CORNER RECORD**

MONUMENT LOCATED ALONG 3RD STREET AT E STREET  
 SAN RAFAEL MARIN CALIFORNIA